



DRIVING DISABILITY INCLUSION IN INDIA

*Bridging gaps in health, education,
livelihoods, & community participation
for persons with disabilities.*

Beyond the Gaps



India is home to **1.4 billion people**, with nearly **8%** living with disabilities. Yet disability continues to remain at the margins of financial & policy priorities.

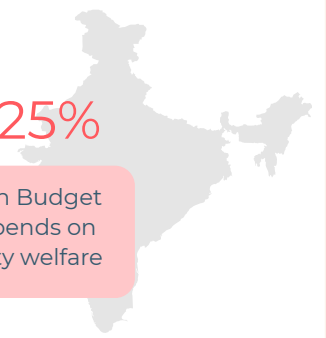


Despite a strong rights-based legal framework, **spending is minimal**

Schemes like SIPDA & pensions remain underfunded/ stagnant.

0.025%

of Union Budget **India** spends on disability welfare



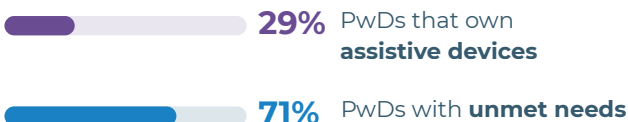
Accessibility, inclusive education, and research receive negligible investment, leaving most PwDs without essential support.

This is not to say efforts are absent. India has a **progressive rights-based legal framework** and **targeted schemes**, but the challenge lies in translating these into lived realities, especially in rural and remote areas where state capacity is stretched. Disability support often gets reduced to **aids or cash transfers**, when what's needed are **systemic investments in inclusive education, research, advocacy, and large-scale accessibility**.

At the Grassroots



PwDs living in **rural India**, where something as basic as a wheelchair-friendly road or an accessible toilet remains a rarity. Stigma and discrimination continue to shape daily life, with disability often associated with pity, shame, or superstition.



Economic participation is far below the national average, reinforcing cycles of poverty and exclusion.

This is where grassroots organizations play a critical role. They respond to complex realities by adopting a multi-pronged approach



EDUCATION



LIVELIHOOD



GENDER JUSTICE



STIGMA REDUCTION

Disability is never experienced in isolation. It **intersects** deeply with gender, caste, class, geography and other identities, often compounding exclusion.



Women with disabilities that constitutes of **11.9 million individuals** are pushed to the very margins:

less likely to attend school, less likely to find work, and more vulnerable to neglect, abuse and violence.

Accessibility, therefore, isn't an add-on but a cornerstone of development, creating environments that are not only inclusive but also transformative, enabling participation and reshaping how development is experienced.



27

organizations from Rebuild's portfolio focus on disability

These are **small**, often **under-recognized organizations** embedded in the communities, whether in aspirational districts, flood- or drought-prone regions, or areas of entrenched marginalization.

Pioneers in Action

Prodigal Homes:

Nagaland's first disability-focused organization, extending care through rehab & community support.

KZSVS:

Turned disability from a pilot into a core focus using flexible funding.

Global Trust:

Parents lead management & service delivery, ensuring true ownership.

Prabhat Education Foundation:

Builds systemic change through partnerships and policy influence.

Sri Arunodayam Charitable Trust:

Special Mom Forum turns caregiver stories into policy recommendations.

Rebuild's Coverage

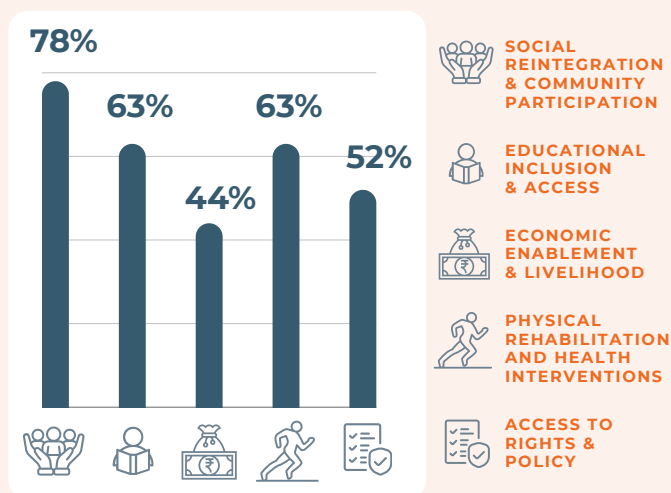
FOCUS AREAS



Disability-focused organizations **address intersecting needs** through community reintegration, social inclusion, health care, education, and livelihoods based interventions, while also investing in recreation, infrastructure, and nutrition for holistic inclusion.

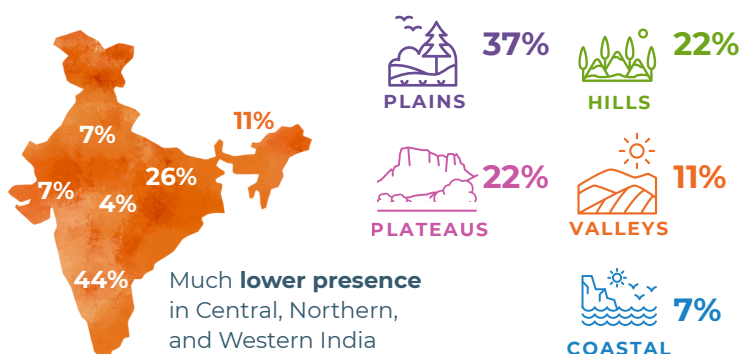
MODELS OF ENGAGEMENT

Organizations follow **diverse, integrated models** illustrated below to meet complex disability needs.

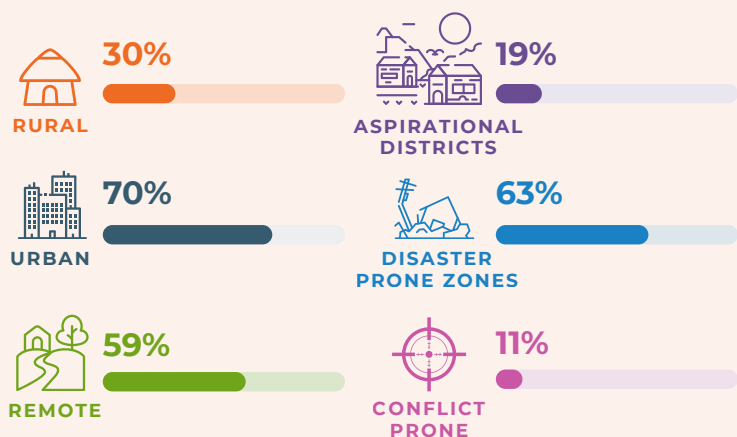


GEOGRAPHICAL SPREAD

Rebuild's disability portfolio spans diverse **geographies** and **communities** across India, with the highest concentration of organizations in the south and a lighter spread across the north, central, and north-east. Even in hilly and valley regions where terrain creates acute barriers to healthcare, mobility, and resources, **grassroots NGOs** demonstrate a clear commitment to reaching the hardest-to-access populations.



REGIONS OF IMPACT



Many portfolio organizations are positioned in geographies where persons with disabilities face compounded challenges.

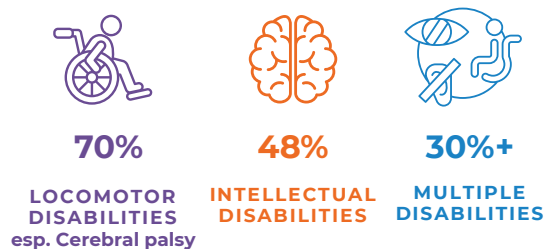
This necessitates **integrating Disaster Risk Reduction** as a vital development strategy to address resource gaps, limited aid, and difficult living conditions through stronger risk-reduction measures.

DISABILITIES ADDRESSED

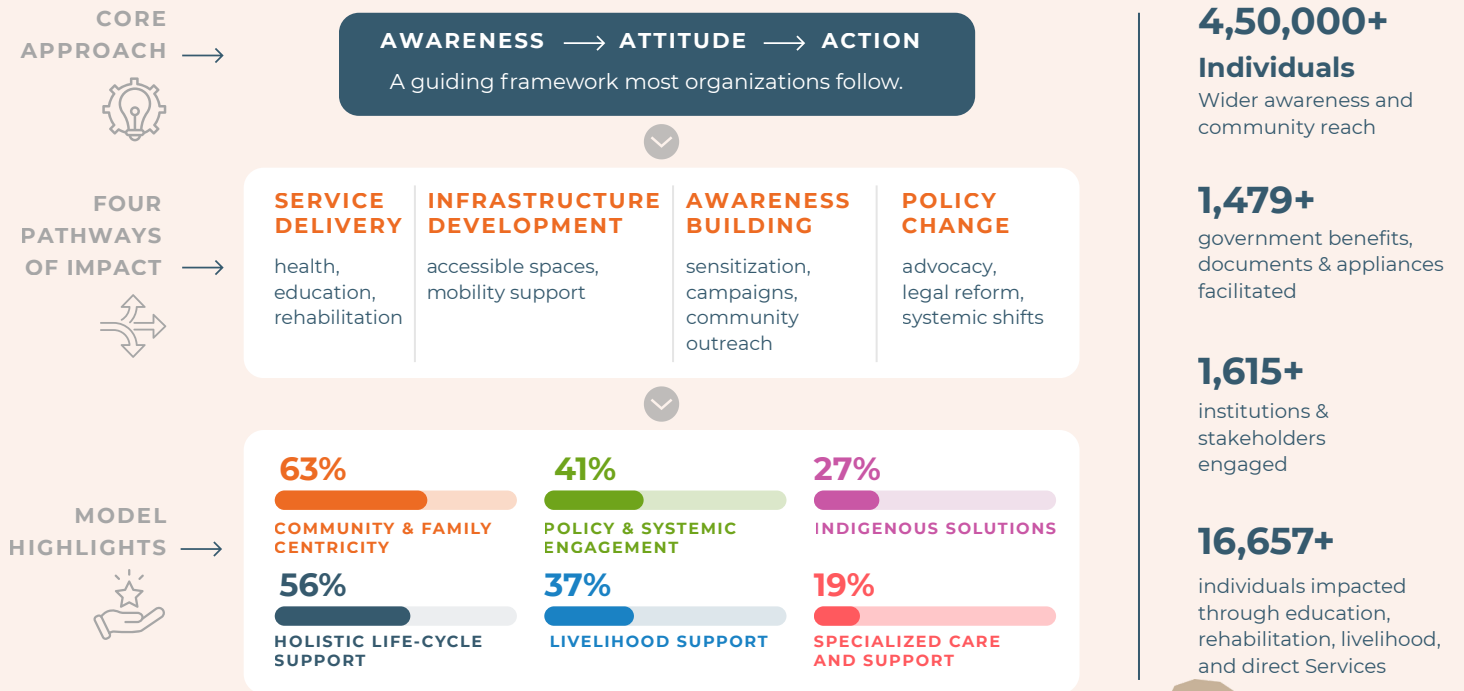
The portfolio addresses a wide spectrum of disabilities, from **common locomotor conditions like cerebral palsy** to **intellectual, visual, and hearing impairments**, as well as **mental illness, muscular dystrophy, and speech disorders**. It also supports individuals with critical or rare conditions, including **acid attack survivors, persons with dwarfism, haemophilia, and thalassemia**.



There are a total of 21 types of disabilities and our organizations focus on 14 out of those 21.



Impact on Ground



WHAT HAS FLEXIBLE FUNDING ENABLED?

Flexible funding **fortifies disability programs**, ensuring stability and sparking inclusive innovation. It nurtures resilient institutions, expands opportunity, reduces stigma, and sustains dignity through growth, training, and adaptive services.

ORGANIZATION STRENGTHENING

Stability
Innovation
Visibility
Sustainability

COMMUNITY OUTCOMES

Access and Entitlements
Health and Rehabilitation
Livelihoods and Inclusion
Crisis Response

REACH & SCALE

15+ villages
1000+ PWD's
3500+ awareness

Stories of Change

Kenduadihi Bikash Society

Kenduadihi Bikash Society adopts a **life-cycle approach** - identifying children early, engaging communities, mainstreaming them into development, and enabling livelihoods. Its work extends beyond local impact to national reforms, contributing to the **PWD Act 2016**, securing voting rights, and ensuring children with disabilities were included in the 2011 Census database.

Ya All

In Manipur, where recurring unrest and crises aggravate the struggles of those with the **often-invisible psychosocial disability**. The intersectionality of psychosocial disability and gender identity furthers the challenges of the issues relating to disability. Critical to the impact created by Ya All, flexible funding has been pivotal in piloting newer models of engaging stakeholders and linking them to government programs. Flexible funding has **leveraged football as a tool for systems changes**, enabled youth to come together, initiated conversations, and linked them to government service providers.

Join the Movement

True access needs more than services - it demands **hyper-local solutions**. Rebuild India Fund backs grassroots action in **infrastructure, technology, and training** to build lasting inclusion and dignity.



TO KNOW MORE ABOUT OUR PARTNERS AND THEIR WORK ON DISABILITY, VISIT [REBUILDINDIAFUND.ORG](https://rebuildindiafund.org), FOLLOW US ON [LINKEDIN](#), OR WRITE TO REBUILD@DASRA.ORG.